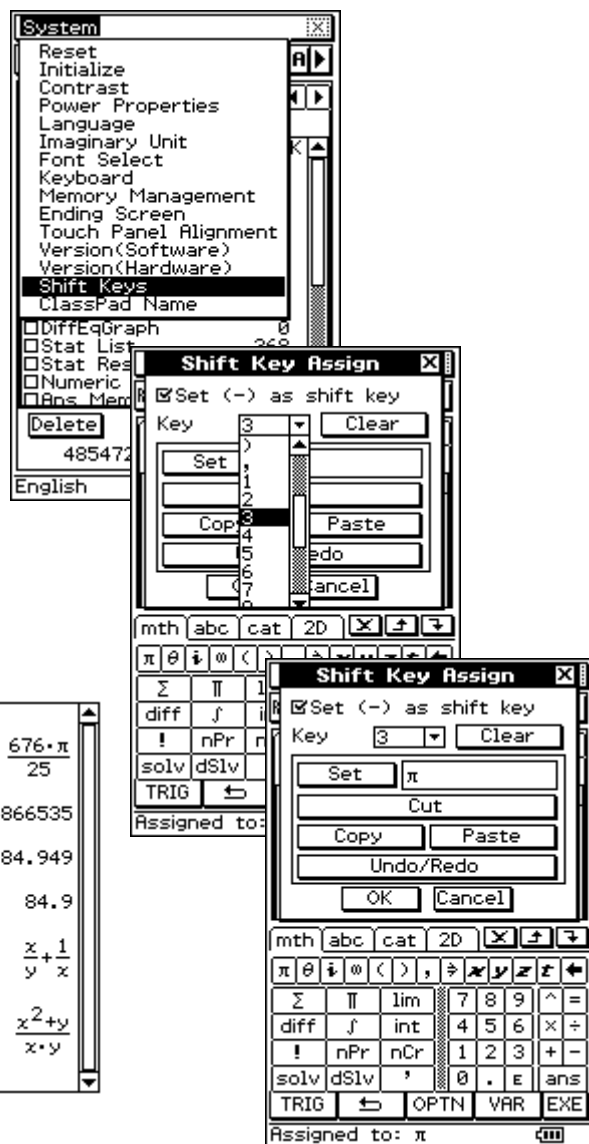


## ClassPad Shift Keys

Enabling the (-) key as a shift button allows users to recall frequently used commands with just two key presses, speeding up ClassPad operation. Commands must be stored by individual users as outlined below.

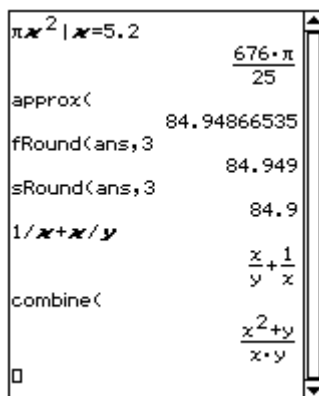


Also see sheet /movie number **980** at [www.classpad.com.au](http://www.classpad.com.au)



Suggested ClassPad shift keys:

Key	Function	3AB	3CD	Spec
=	solve(	✓	✓	✓
(	[			✓
)	]			✓
,	solve(ans	✓	✓	✓
x	Define f(x)=		✓	✓
y	f(x)		✓	✓
z	Define g(x)=		✓	✓
^	g(x)		✓	✓
1	(given)	✓	✓	✓
2	e		✓	✓
3	π	✓	✓	✓
4	∫	✓	✓	✓
5	approx(	✓	✓	✓
6	simplify(	✓	✓	✓
7	diff(	✓	✓	✓
8	infinity	✓	✓	✓
9	i			✓
0	sRound(ans,	✓	✓	✓
.	fRound(ans,	✓	✓	✓
EXP	cis( (*Define first)			✓
EXE				
÷	factor(	✓	✓	✓
×	expand(	✓	✓	✓
-	-			
+	combine(		✓	✓



**How to set your own ClassPad shift keys**

1. From the MENU enter the System app.
2. Tap System, Shift Keys.
3. Tick Set (-) as shift key.
4. Choose key from drop down menu.
5. Tap into box to right of Set and enter required function.
6. Tap Set.
7. Repeat steps 4, 5 and 6 as required.
8. Tap OK.
9. Go to the Main app and test your Shift Keys:  
Tap (-) and note the arrow appear beside the battery indicator and then tap the required key.