

ClassPad - Data transfer between two handhelds

You'll need two ClassPads, one to transmit and the other to receive and a 3pin cable. Both should have batteries in good condition, otherwise a communication error is likely.



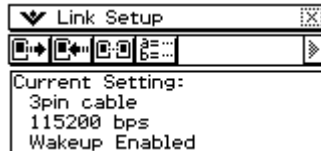
Step 1 - Prepare both handhelds for 3pin cable communication



Enter the communication app *Communica...*, tap **Setup** and **Open Setup Menu**. Tap **Default** and then choose **Cable Type** as **3pin cable** and finally tap **Set**.



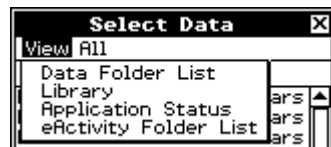
Your screen should now look like this:



Step 2 - Firmly insert the 3 pin cable into both handhelds - you should hear a 'click' when fully inserted.

Step 3 - Now work solely on the transmitting ClassPad to find and select the files you wish to transmit.

Tap **Link, Transmit**.



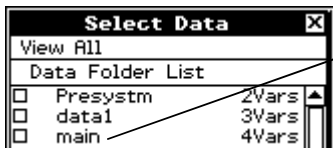
ClassPad stores your files in four locations

- Data Folder
- Library
- Application
- eActivity Folder

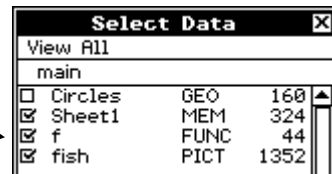
Tap **View** and your screen should look as shown:

Select each location from the View menu to find files to transmit.

Example selection from the main folder in the Data Folder List:



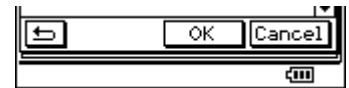
Tap on main to open folder. Select box for file(s) to transmit



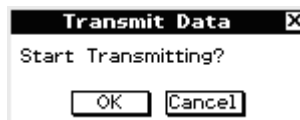
Some common file types include
 GEO - geometry
 MEM - spreadsheet
 FUNC - function
 PICT - picture

Three folders are shown in the above Data Folder List. Presystm containing 2 files, data1 with 3 files and main with 4 files. It is very likely that your ClassPad will have different folders and files.

Step 4 - Once all items have been selected, tap **OK** at the bottom of the screen.



Confirm that you are ready to transmit - tap **OK**.



Step 5 - Check that the receiving ClassPad automatically starts to receive data, and then wait until a message informs you that transmission is complete.



The most common cause of errors is the 3pin cable not being fully inserted into the sockets on ClassPad.

Note that Add-In applications such as Algy or games (Tetris, Sudoku and so on) cannot be transmitted between handhelds. They can only be installed from a PC using the FA-CP1 software.