

# ClassPad II - Tips and Tricks

Downloads	www.charliewatson.com/atar/
Author	Charlie Watson

ClassPad Help Series at [www.classpad.com.au/atar/](http://www.classpad.com.au/atar/) now has videos grouped by math ATAR course – Units 1&2, 3&4 for General/Applications, Methods and Specialist.

## ClassPad II

Keep your ClassPad II operating system up to date. November 2016, the latest is:

**02.01.0000.0000**

Visit <http://edu.casio.com> for free download of OS update for both handheld and manager (PC version)

### Main

Settings, Basic Format, Number Format best set to Normal 2 to avoid display of small numbers in scientific notation.

Use default option in Graph Format and Geometry Format to reset apps and fix any issues (eg no axes displayed, etc).

### Main

Shift keys can speed up student work in many apps.

Assign or modify shift keys in System.

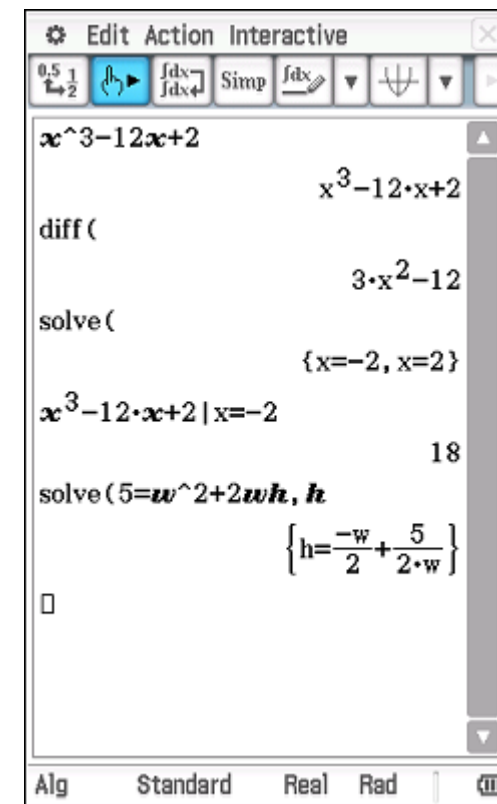
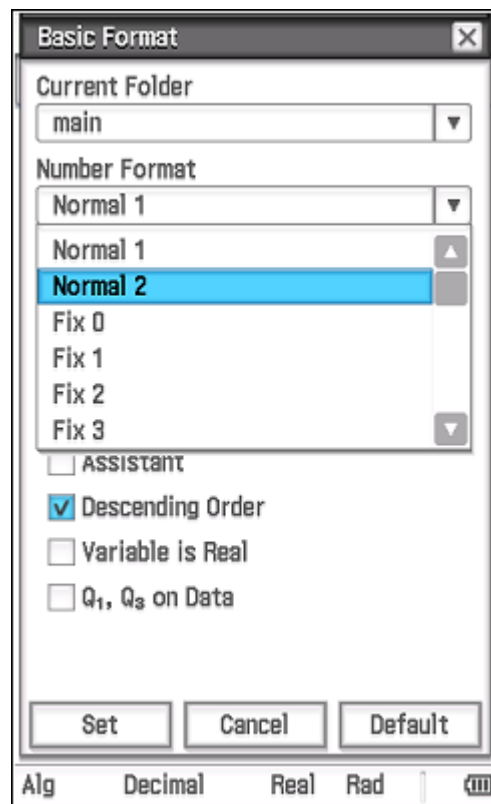
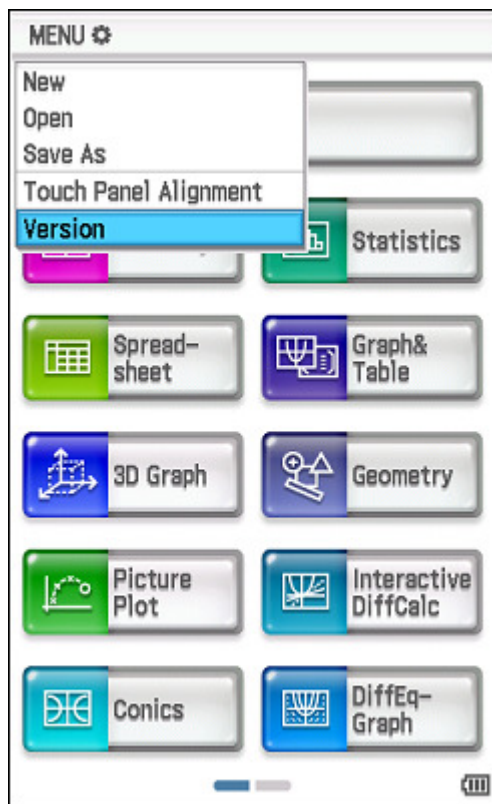
### Main

Quick ways to solve, diff, etc. Note assumptions and defaults.

Substitute using | from the Math 3 menu.

Use solve to rearrange equations for a particular variable.

Use the 'finger' to recalculate single line.



# ClassPad II - Tips and Tricks

Downloads	www.charliewatson.com/atar/
Author	Charlie Watson

**Main**  
Graph functions using split screen, especially those implicitly defined or relations.

Define  $f(x)$  and use for exploring function transformation.

**Zoom In/Out/Auto**  
In Graph and Table, Geometry or any other type of graph/drawing app such as statistics, tap the [+ ] or [- ] key to zoom in or zoom out. Tap the [= ] key to auto scale (result depends on application).

**Geometry**  
Solve scale drawing and coordinate geometry problems.

**Conics**  
A great application for exploring relations rather than functions.

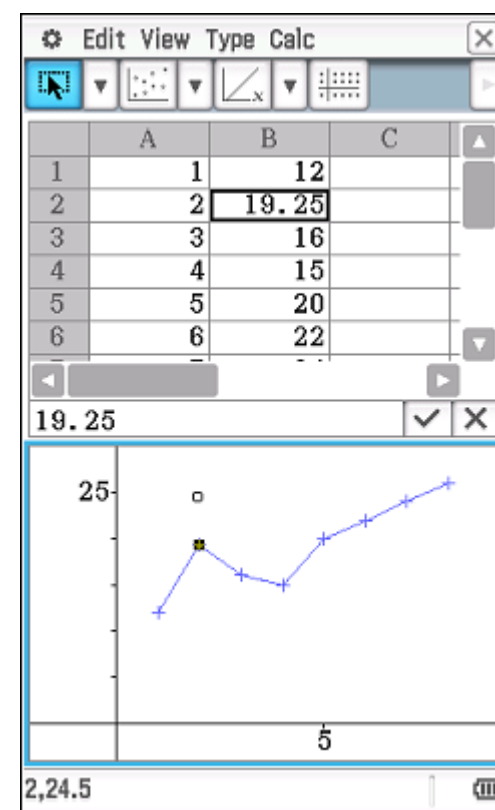
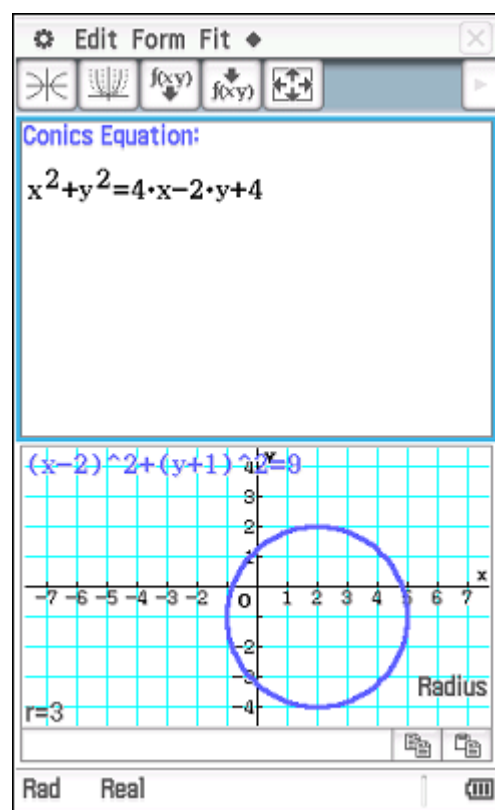
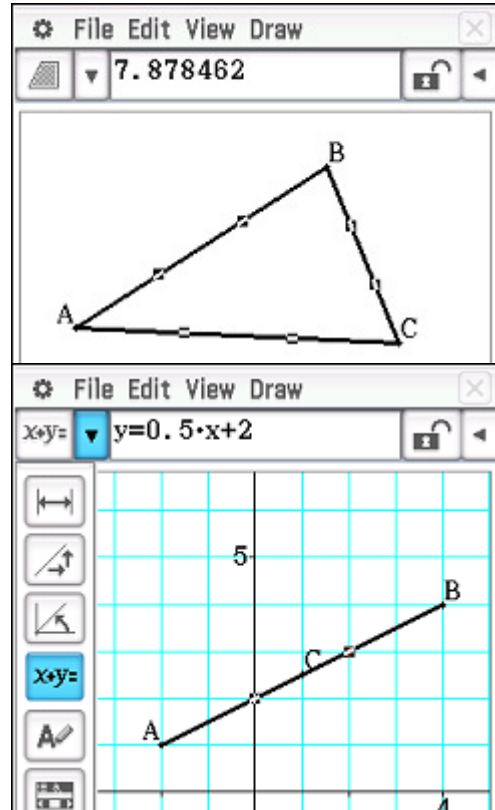
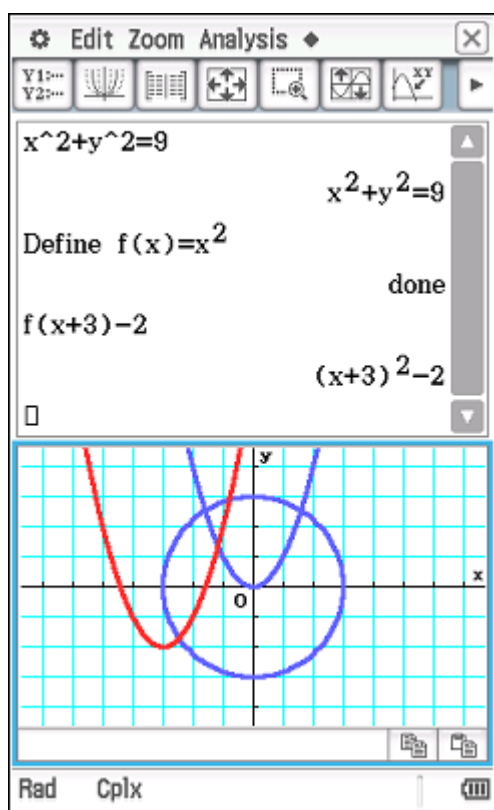
G-Solve menu is relation-smart and changes depending on type of graph.

Don't miss the Fit to Form tools!

**Spreadsheet**  
Two types of selection before dragging - black or no cell border.

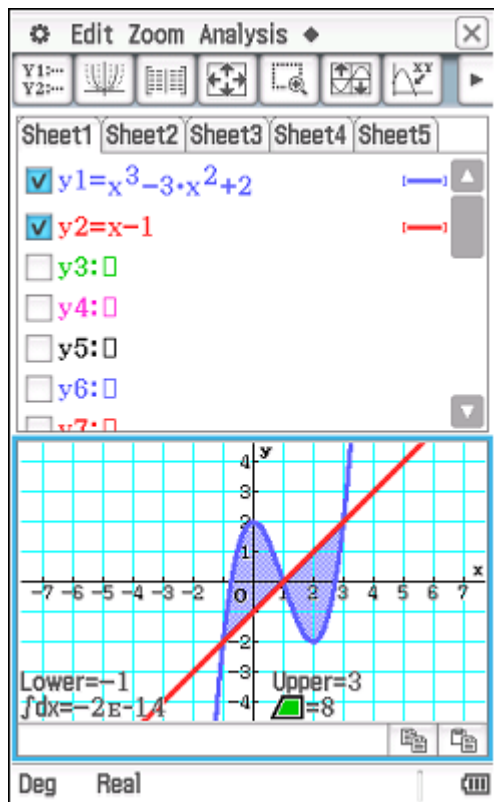
Use Edit/Fill/Range to fill selection.

Create time series, etc, by dragging data points on graph.



## Graph and Table

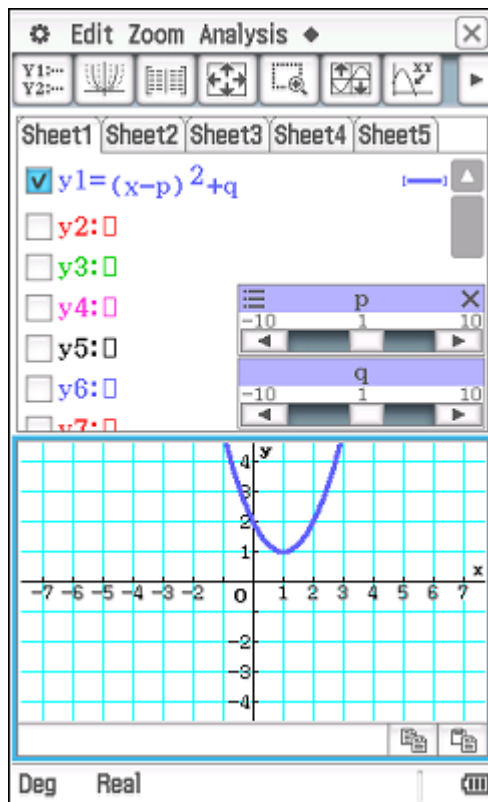
Evaluate the area trapped between the lines  $y = x^3 - 3x^2 + 2$  and  $y = x - 1$ .



## Sliders and graphs

Try sliders to animate graphs in Graph and Table, Conics, Picture Plot and Geometry.

Make sure your CPII OS is at least v2.



## eActivity

Use eActivities to store formulas in NumSolve strips and methods in Main strips.

Add Strip help to include notes with strip.

Download eActivities for ATAR courses from [charliewatson.com/atar/](http://charliewatson.com/atar/)

## Financial

With PV, PMT and FV interpret money into your pocket as +ve and money out of pocket as -ve amounts. Easy!

Compound Interest, Amortization and Interest Conversion all useful tools.

**Solve**  $\sqrt{x}$

F=Future Value (\$)  
 P=Principal (\$ at start)  
 R=Rate of interest (%pa)  
 T=Time (Years)  
 N=Number of times interest is paid per year.  
 Eg Annually N=1  
 Quarterly N=4

**Equation:**

$$F = P \cdot \left(1 + \frac{R}{100 \cdot N}\right)^{N \cdot T}$$

- F=
- P= 3500
- R= 5.5
- N= 12
- T= 4

**Compound Interest**

N	24
I%	18
PV	16000
<b>PMT</b>	<b>-798.7856315</b>
FV	0
P/Y	12
C/Y	12

Amount paid each period

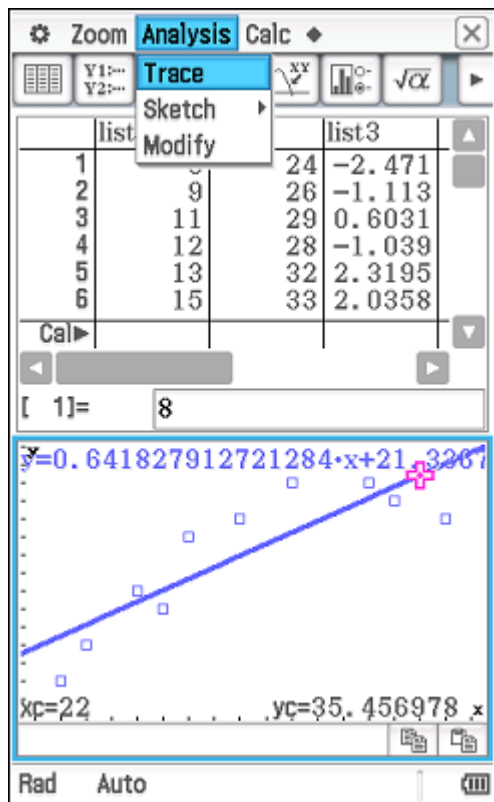
# ClassPad II - Tips and Tricks

Downloads	<a href="http://www.charliewatson.com/atar/">www.charliewatson.com/atar/</a>
Author	Charlie Watson

## Statistics

Always type slowly and carefully!

To predict from a regression line, tap Analysis, Trace after the regression line has been graphed. Then type the x-coordinate of the required prediction and the y-Cal entry box appears. (Domain error means extrapolation, so cancel, zoom out and try again).



## Program

In the Program app, select required program (must first be loaded into ClassPad - no pre-loaded programs) and then tap the play button.

If program has to pause, tap play button to continue (located next to battery status icon at bottom right of screen).

Row	Start	Int	Repay	End
5	1350.34	13.50	180.00	1183.84

## Downloads

Connect your CPII to your PC or Mac, select the USB Flash mode and CP will appear as a removable drive. Download eActivities, programs, pictures, csv files and so on straight from the web to the USB storage memory of ClassPad.

Import these items into the working memory of your CPII using System/View Storage & Import.

## System

Customise Name and Ending Screen.

Display Settings - lower backlight brightness to save batteries.

Power Properties/Power - Auto Off: 10 min and Backlight Duration: 30 sec.

Reset & Initialise - sort out ClassPad issues! Initialise -> factory settings.