

## Using The FA-124 Software - Basics

This guide contains five sections:

A. Installing the software.....	1
B. Loading eActivity files (*.g1e) into the fx-9860G.....	1
C. Loading program or spreadsheet files (*.g1m) into the fx-9860G.....	3
D. Loading image files (*.g1s) into the fx-9860G.....	3
E. Loading Add-In files (*.g1a) into the fx-9860G.....	4

The FA-124 software is supplied on the CD that came with your fx-9860G. It must be installed on your computer BEFORE you first use the supplied USB cable to connect up an fx-9860G.

### A. Installing the software

1. Insert the Utilities CD that came with your calculator.
2. Choose **Program-Link FA-124 User's guide**, read (and possibly print) pages E6 to E12 which explain how to install the software and then close the manual.
3. Choose **Program-Link FA-124 Install file** and double click the SetUp icon, following the on-screen instructions as in the manual.
4. Note: fxNews assumes that users have installed the software in the default locations.

### B. Loading eActivity files (\*.g1e) into the fx-9860G

FA-124 has two explorer windows. One for the fx-9860G on the left and one for the Computer on the right.

*The two FA-124 windows. On the left fx-9860G and on the right Computer.*



Both windows have two views – main memory and storage memory– and they will always show the same view. To change between the views click on one of the right most two toolbar icons in either window.



Main Memory




Storage Memory

eActivities are always located in Storage Memory, whereas programs and spreadsheets can be found in both Main and Storage. In this edition of fxNews we will explain how to transfer files between storage memories. In later editions we will look at working with main memory.

Loading eActivities into the fx-9860G requires two basic steps

1. loading the eActivity into the FA-124; and
2. transferring the eActivity to the fx-9860G

## Step 1: Loading the eActivity into the FA-124




1. Open the FA-124.
2. Select storage memory view (Click on the  icon).
3. Select the computer window.
4. Right click on the Default icon under the Computer icon and select Import fx-9860G File.
5. This will bring up a file browser window. eActivities always have the file extension \*.g1e. Change the 'Files of type' drop down menu to either All Files(\*.\*) or simply G1E File(\*.g1e).
6. Find the \*.g1e file that you need, select it and click on open.
7. The eActivity has been added underneath the Default icon.

Note. Later on you may wish to create your own 'Images' to organise your eActivities, programs, etc. Simply right click the Computer icon, choose Add New Image, give it a name and that's it. You can also create folders within an image for even more organisation.

fxNews software is supplied in a single folder within a single image.

All image files have file extension \*.g1s and are automatically saved in the default CASIO/FA-124/ folder within My Documents.

## Step 2: Transferring the eActivity to the fx-9860G

1. Plug the USB cable into your computer then into your fx-9860G.
2. The fx-9860G should automatically start waiting for communication from the FA-124. If it does not:
  - a. Go to the Main Menu, tap down and open Link.
  - b. Make sure the Cable Type is USB and Wakeup is On.
  - c. If they are not, change them.
  - d. Tap RECV (F2) to choose Receive.
  - e. The fx-9860G is now waiting for you to transfer files.
3. Go back to the FA-124. The fx-9860G is ready to receive files, but the FA-124 is not ready to send them. Look in the fx-9860G window on the left and click on  - the first icon on the left in the fx-9860G window's toolbar. This will connect the FA-124 to the fx-9860G, and you will see information from the fx-9860G being sent to the computer.
4. Now simply drag the eActivity from the Computer window to the lower fx-9860G icon  in the fx-9860G window.
5. Click on the disconnect icon  on the fx-9860G window's toolbar (2nd button in the toolbar from the left) to disconnect the FA-124.
6. On the fx-9860G, the connection will have automatically ended. Tap EXIT, MENU and then start the eACT application. You will see the name of the eActivity amongst the list. Highlight and tap EXE to start.

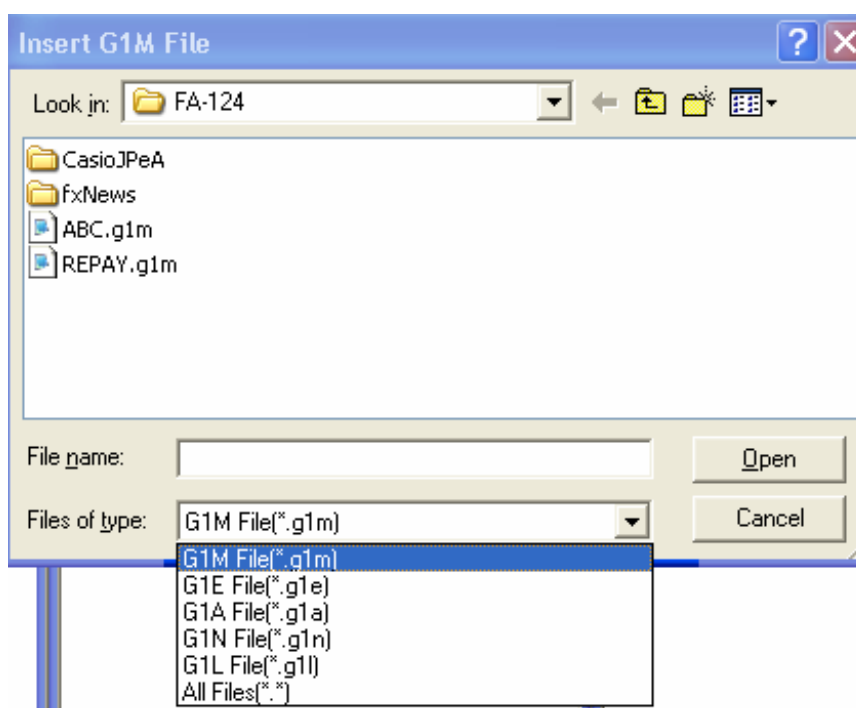
## C. Loading program or spreadsheet files (\*.g1m) into the fx-9860G

As mentioned earlier, programs and spreadsheets can reside in both Main and Storage memory. When in storage memory, the process for transferring either into your fx-9860G is identical to that for eActivities, except that program and spreadsheet collections are saved in files with extension \*.g1m.

Place a copy of your program or spreadsheet file in the My Documents/CASIO/FA-124/ folder (for example mySheet.g1m).

Now repeat the instructions in Part B, but during Step 1, Part 5, make sure you set the Files of type to G1M File (\*.g1m).

*The Insert fx-9860G file dialog box.*



## D. Loading image files (\*.g1s) into the fx-9860G

The process is again the same as for eActivities with just one difference.

In Step 1, Part 4, right click on the Computer icon itself and select Insert Existing Image. This will bring up a file browser window that is only looking for files of type 'CASIO Flash File System (\*.g1s)'.

Find the \*.g1s image file that you need, select it and click on open. The image will be inserted beneath the Computer icon.

## **E. Loading Add-In files (\*.g1a) into the fx-9860G**

Add-Ins are applications such as Geometry (constraint based geometry application), Physium (Periodic table) and Econ (for data-logging) that can be downloaded from various websites.

When in storage memory, the process for transferring Add-Ins into your fx-9860G is identical to that for eActivities, except that Add-Ins are saved in files with extension \*.g1a.

Save a copy of your Add-In file in the My Documents/CASIO/FA-124/ folder (for example Geometry.g1a).

Now repeat the instructions in Part B, but during Step 1, Part 5, make sure you set the Files of type to G1A File (\*.g1a).