

# WATSON & WATSON

## Interface Cables

[www.charliewatson.com](http://www.charliewatson.com)

### Software Installation and Use Notes

#### **1. Installing the FA-122 software on a PC with Windows 3.1 or later.**

*A. If software has been downloaded from the Internet:*

Download the free FA-122 software from the Casio *Calcs'n'Cables* page at [www.charliewatson.com](http://www.charliewatson.com)

Double-click the downloaded file and it will self-extract 6 files into a temporary folder (C:\temp\fa-122\ unless you choose elsewhere) and then proceed as in part B.

*B. If software is on a floppy disk or in a folder on your hard drive:*

Locate the setup.exe file and double click to start the installation program.

Click OK to agree to install into the suggested folder C:\FA-122.

Click OK when the installation complete box appears at the end.

You will now have to restart your computer for most versions of Windows to be able to use the FA-122 fonts (which were added to your fonts folder during installation).

#### **2. Cable Connection.**

Connect the D plug into a spare serial COM port at the rear of your computer - usually the COM1 or COM2 port with 25 pins. (If the spare port on your computer only has 9 pins you will need to buy a 25 to 9 pin adapter from any computer shop - but note that connection can only be made through a COM port - not printer or games port which have holes rather than pins.)

[Optional: You can check the COM port settings for the serial port you are using by accessing your computers Control Panel. They should be: *BPS: 9600. Parity: None. Data Bits: 8. Stop Bits: 1. Flow control: None.*]

#### **3. Starting the program for the first time.**

Double click the FA-122.EXE file or desktop shortcut to start the software.

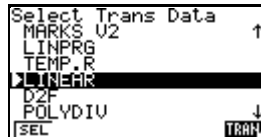
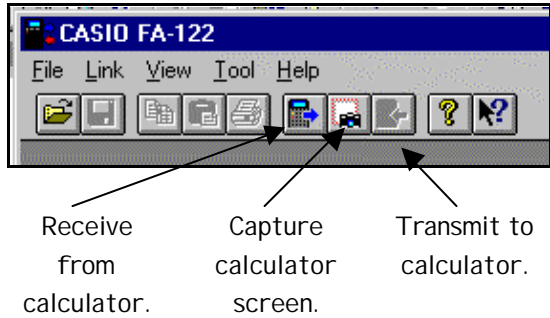
The first time you use the software do these two things:

1. Select the Link, Communications menu and specify the port you are using (eg COM2).
2. Select the Tool, Model Type menu and specify the calculator you are using.

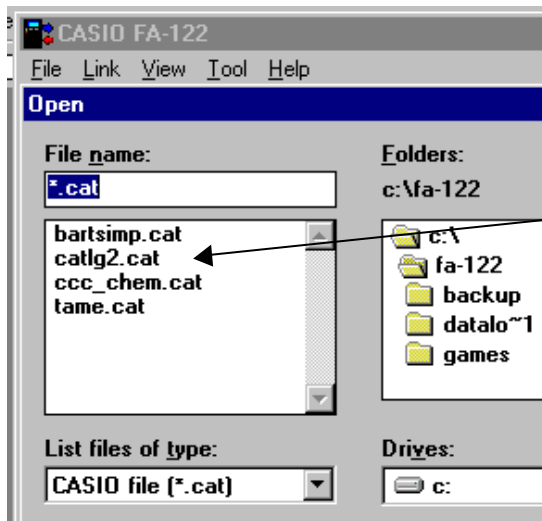
*You should not need to do these two steps again unless software is re-installed.*

# Using the FA-122 calculator to PC software to transfer programs, screen dumps, etc, between PC and calculator.

Transferring programs between a PC and a calculator is very similar to transferring calculator to calculator. First connect the calculator using the cable, then set up the receiving end to receive and finally transmit from the source.



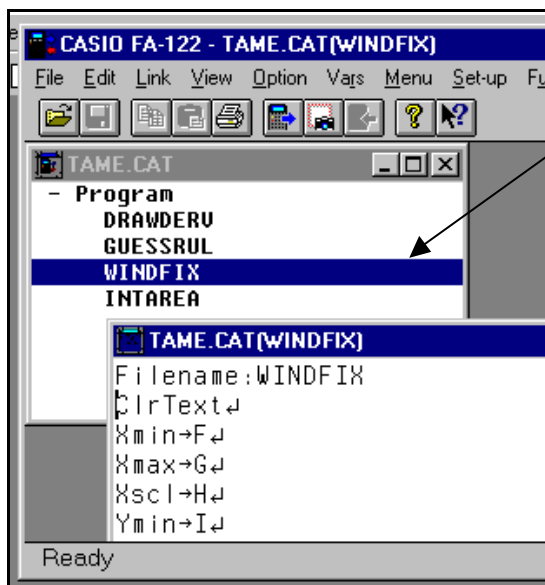
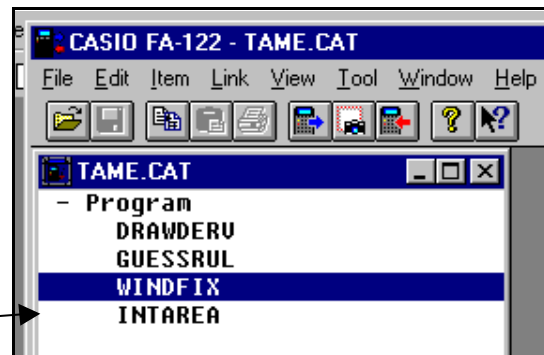
Remember to press F1 on your calculator to SElect individual programs before you TRANsmit. (A small arrow appears to the left of each selected program)



You can open Casio files and programs previously saved on your computer (eg from a calculator or the Internet). Such files should always have the .cat extension. Some Internet downloads may be saved as text or html files. These will have to be renamed with extension .cat to open correctly.

See the technical links page at [www.charliewatson.com](http://www.charliewatson.com) for more help.

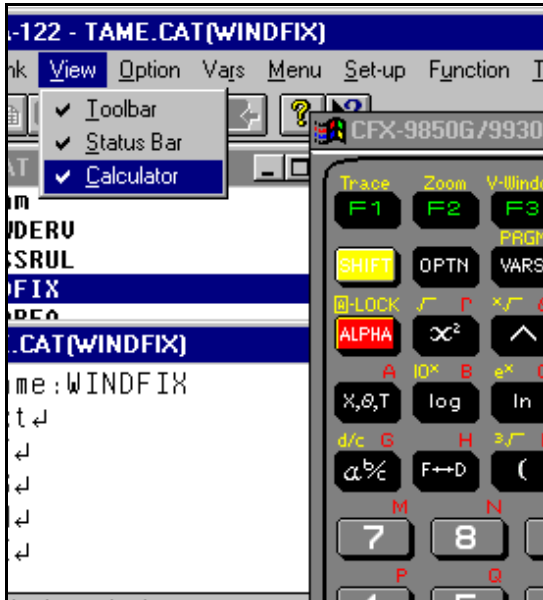
When you open a 'catalog' double click + Program to see a list of all programs saved in the catalog. Then highlight the program(s) you want to transmit to your calculator before clicking on the transmit button. Hold down the Ctrl key to make multiple selections.



Double clicking on an individual program will open the program ready for editing on the computer.

Notice how the number of menus in the toolbar increases. These contain all the functions available on the calculator to assist in writing a program.

Be careful that you use correct syntax in programs, especially in the spacing between commands. Study programs from other sources to learn quickly!



You can also use a calculator keypad to insert commands and symbols.

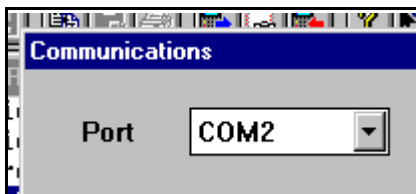
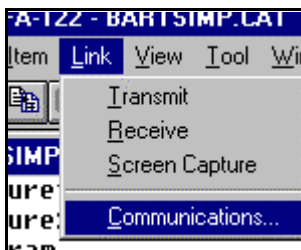
To display the calculator use View, Calculator. This is useful for symbols such as divide ( $\div$ ), assign to memory ( $\rightarrow$ ), etc.

Don't forget your calculator manual is also a valuable source of help for calculator communication and programming information. If you've lost it, you can always download a replacement from the Casio Japan education site - follow the link from the math links page at [www.charliewatson.com](http://www.charliewatson.com)



Troubleshooting:

1. Check the plug is fully inserted into the calculator. You usually feel a 'click' when it is fully inserted.
2. Check that the Model Type is set correctly in the Tool menu.
3. Check that the Communications port is set correctly - typically either COM2 or COM1.
4. Check you have correctly selected the items to transfer.
5. You may occasionally experience Transmit Error messages on your calculator even after checking the above. Check to see if the program is listed in the program menu. If it is, then transmission has been OK.



Linking to the latest model - CFX 9850GB+ WE

Recently we've fielded a few queries about our cables and the latest blue and white model CFX9850GB+WE from Casio...

Points to note are

- ?? Remove the calculator from its protective cover;
- ?? Insert the plug so that the cable is vertical.



## Step by step transmit/receive instructions (Windows)

### 1. Transmit a program (or notes) from calculator to PC.

*Computer:*

Click on the receive button (or Receive from the Link menu)

*Calculator:*

Choose LI NK mode from the main menu and then select Transmit (F1).

Use arrows to move down to item(s) you want to transmit and select Select (F1) for each one.

Select TRAN (F6) and then select YES (F1).

Once transfer is complete the calculator will inform you. Press AC to continue.

*Computer:*

A new 'catalog' window will appear after data transfer. To save this 'catalog' select File - Save, specify a file name (must be less than 8 letters) and save.

Double clicking items in the 'catalog' will open them for viewing/editing.

### 2. Transmit a program (or notes) from PC to calculator.

A. Either open an existing 'catalog' with File - Open, or create a new one:

Select File - New and then select I tem - New and give your program/notes a name.

Double click on your new program to launch the editor.

Type up your notes or program and then select File - Close, saving any changes.

Select File - Save to save the 'catalog'. (You will need to specify a file name).

B. Transfer:

*Calculator:*

Choose LI NK mode from the main menu and then select Receive (F2).

*Computer:*

Open the 'catalog' and highlight the items you wish to transfer.

Click on the Transmit button (or Transmit from the Link menu).

Click YES to confirm the calculator is ready to receive.

*Calculator:*

Once transfer is complete the calculator will inform you. Press AC to continue.

### 3. Capture a screen shot of your calculator.

*Calculator:*

Choose LI NK mode from the main menu and then select I mage Set Mode (F6).

Then choose Monochrome (F2) or Color (F3). NB Mono is best for use with black and white printing.

Next perform calculator operations in order to achieve the screen you wish to capture.

*Computer:*

Click on the Camera button (or Screen capture from the Link menu).

*Calculator:*

Press the F? D button to transmit the screen to the computer. (NB This key cannot now be used to convert fractions to decimals until you return to the LI NK mode and set I mage Set Mode to off.)

*Computer:*

A new window with a bitmap image of the screen will appear.

Select File - Save to save the image. (You will need to specify a file name).

*Note for FA-123 software users:* A very similar process applies if you are using our cable and the new FA-123 software to connect with the Casio FX7400 Plus, any CFX model or Algebra FX2.0.

**We strongly recommend use of the FA-122 software unless you have an Algebra model.**

Contact Charlie Watson on 0403 167 715 for cable ordering information and other support or visit us on the web at [www.charliewatson.com](http://www.charliewatson.com)  
PO Box 2130, CLARKSON, WA 6030.